

**The SIAM Executive Segment is  
Dead. Long Live... - Everything  
in an infographic**

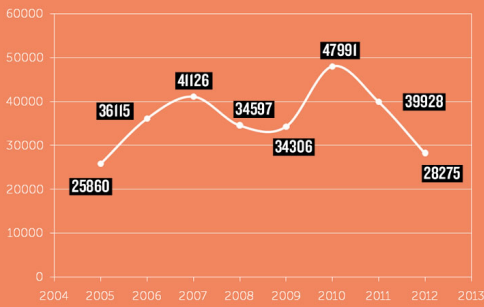


# Is the SIAM Executive Segment DEAD?

## Executive Segment

Sharp decline post the peak in 2010

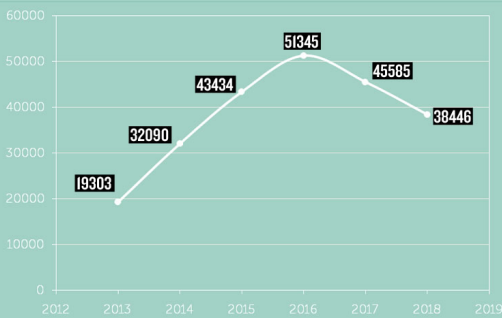
Source : Data | SIAM



## Forecast

A CAGR of 5.2% hides the bumps & jerks

Source : EMMAAA

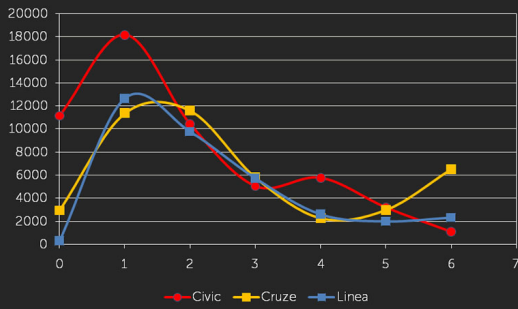


For questions regarding the forecast, please mail at [quickfire@emmaa.com](mailto:quickfire@emmaa.com)

## Lifecycle Issues

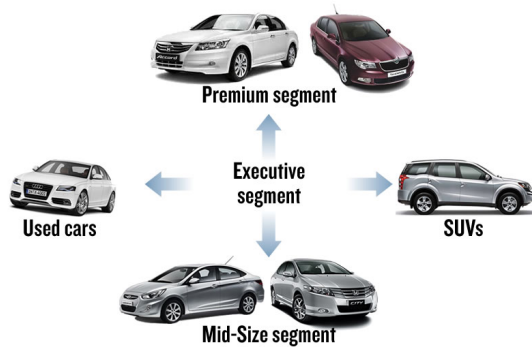
Most models vertically crash in 3rd or 4th year of lifecycle

Source : EMMAAA



## Where is the Executive going ?

Source : EMMAAA



read the full story online at,  
[www.indiaautoreport.com](http://www.indiaautoreport.com)

**IAR** INDIA  
AUTO  
REPORT

knowledge by **EMMAAA**

The SIAM Executive Segment is Dead? Long Live...- Everything in an infographic